

## AMROLL DRUM MOTOR--TM80M

TM80M uses polymer material as the gear material, adopts the planetary transmission structure, fully reduces the operation noise, and has many advantages such as reliable performance, free maintenance, suitable for small installation space and so on. At the same time, due to the special design of the transmission parts, the purchase cost of customers is reduced to the greatest extent, so that this product becomes the ideal driving unit of light load belt conveyor. Over the years, it has been fully recognized and widely used in many fields. This kind of drum motor is typically used in:

- Supermarket checkout conveyors
- X-ray machines
- Packaging machine
- Light load belt conveyor

## TM80M drum motors have the following characters:

### Drum motor shell

- Mild steel crowned shell treated with anti-rust oil
- The standard shell is coronal and the surface is machined with non-slip threads

### Gear transmission

- High polymer gear to ensure ultra-low noise during transmission
- Planetary gear structure

### Motor

- Common global voltages at 50 Hz or 60 Hz
- AC asynchronous motor, S3
- Motor windings insulation class F
- All motors with thermal protection
- Oil cooled electrical motor
- Cable length minimum 1.2 meters outside shaft

### Sealing system

- Double shaft sealing system
- Sealing system-degree of protection IP 66/67

### Oil

- Pre lubricated with oil
- Oil change recommended every 50,000 hours of operation

### Other items

- Electromagnetic brakes are optional, but the length of the shell will be lengthened accordingly
- Belt speed and face width (L) on request
- International authority CE and UL safety certification
- Non-standard drum motors are available on request.

### AMROLL Drum Motor TM80M-1\*230V/50Hz

Power [kW/hp]	No. of poles	Gear stages	Gear ratio	Nominal belt speed [m/s]	Full load torque [Nm]	Full load belt pull [N]	Full load current [A]	Min. face width (L) [mm]	Min.L Weight [kg]
0.034/0.04 5	4	3	106.90	0.05	19.88	485	0.48	280	5
			77.70	0.08	14.92	364			
			56.50	0.10	10.87	265			
		2	19.40	0.30	3.73	91			
			14.10	0.40	2.71	66			
0.06/0.08	2	3	106.90	0.10	17.88	436	0.57	260	5
			77.70	0.14	12.90	315			
			56.50	0.20	9.41	230			
0.085/0.11 5	2	3	77.70	0.15	19.40	473	0.66	270	5
			56.50	0.21	14.10	344			
		2	19.40	0.62	4.85	118			
			14.10	0.85	3.52	86			
0.11/0.15	2	3	77.70	0.15	25.90	630	0.99	280	5
			56.50	0.21	18.80	459			
		2	19.40	0.61	5.91	144			
			14.10	0.84	4.24	103			

At the min. face width (L), the total weight of a drum motor grows approx.0.9kg per 100 mm.

## TM80M optional list-drum motor/idler pulley

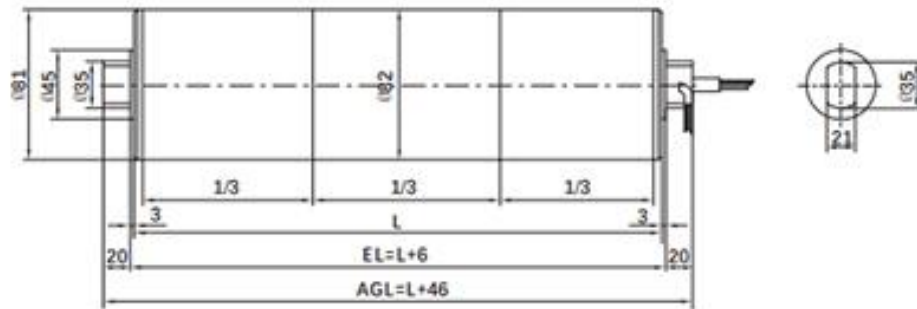
Specifications	Drum motor	Idler pulley
<b>Shell</b>		
Mild steel crowned	1	1
Mild steel cylindrical	2	2
<b>End housing (front &amp; rear)</b>		
Cast aluminium	1	1
<b>Electrical motors</b>		
1-phase asynchronous motor	1	
Voltage 1*230V/50Hz	1	
Most common global voltages at 50 or 60 Hz	1	
Thermal protection	1	
<b>Lubricating oil</b>		
NO.32 hydraulic oil	1	
Low temperature oil	2	
<b>Electrical connection</b>		
Straight/elbow cable connector	1	
Oil resistant PVC cable	1	

Note:

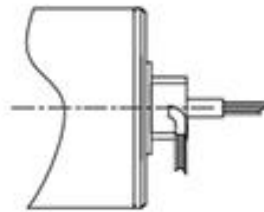
1-fitted as standard 2-optional extras

## Standard Dimension

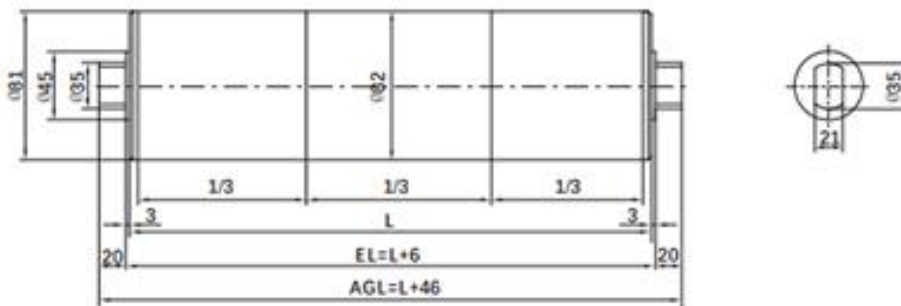
### TM80M Drum motor

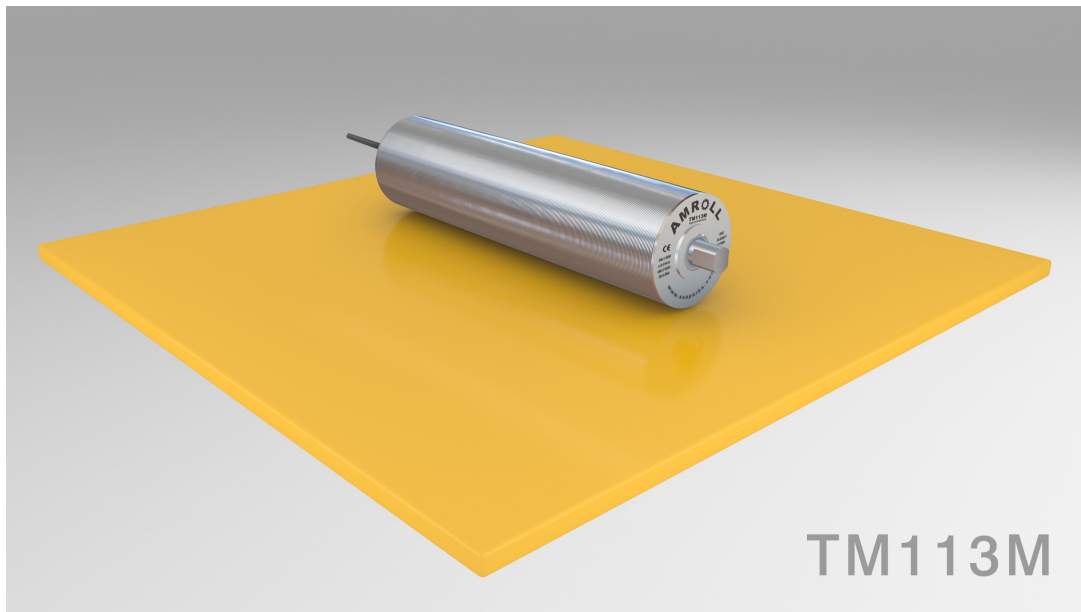


Straight/elbow cable connector



TM80M Idler roller





## AMROLL DRUM MOTOR--TM113M

TM113M uses polymer material as the gear material, adopts the planetary transmission structure, fully reduces the operation noise, and has many advantages such as reliable performance, free maintenance, suitable for small installation space and so on. At the same time, due to the special design of the transmission parts, the purchase cost of customers is reduced to the greatest extent, so that this product becomes the ideal driving unit of light load belt conveyor. Over the years, it has been fully recognized and widely used in many fields. This kind of drum motor is typically used in:

- Supermarket checkout conveyors
- X-ray machines
- Packaging machine
- Light load belt conveyor

## TM113M drum motors have the following characters:

### Drum motor shell

- Mild steel crowned shell treated with anti-rust oil
- The standard shell is coronal and the surface is machined with non-slip threads

### Gear transmission

- High polymer gear to ensure ultra-low noise during transmission
- Planetary gear structure

### Motor

- Common global voltages at 50 Hz or 60 Hz
- AC asynchronous motor, S3
- Motor windings insulation class F
- All motors with thermal protection
- Oil cooled electrical motor
- Cable length minimum 1.2 meters outside shaft

### Sealing system

- Double shaft sealing system
- Sealing system-degree of protection IP 66/67

### Oil

- Pre lubricated with oil
- Oil change recommended every 50,000 hours of operation

### Other items

- Electromagnetic brakes are optional, but the length of the shell will be lengthened accordingly
- Belt speed and face width (L) on request
- International authority CE and UL safety certification
- Non-standard drum motors are available on request.

### AMROLL Drum Motor TM113M-1\*230V/50Hz

Power [kW/hp]	No.of poles	Gear stages	Gear ratio	Nominal belt speed [m/s]	Full load torque [Nm]	Full load belt pull [N]	Full load current [A]	Min. face width (L) [mm]	Min.L Weight [kg]
0.11/0.15	4	3	74.27	0.11	44.02	779	0.99	350	10
			56.59	0.15	35.22	623			
			43.07	0.19	27.80	492			
0.15/0.20	4	3	74.27	0.11	60.03	1062	1.55	350	10
			56.59	0.15	48.03	850			
			43.07	0.19	37.91	671			

At the min. face width (L), the total weight of a drum motor grows approx.1.4 kg per 100 mm.

## AMROLL Drum Motor TM113M-1\*115V/60Hz

Power [kW/hp]	No.of poles	Gear stages	Gear ratio	Nominal belt speed [m/s]	Full load torque [Nm]	Full load belt pull [N]	Full load current [A]	Min. face width (L) [mm]	Min.L Weight [kg]
0.11/0.15	4	3	74.27	0.11	44.02	779	1.60	350	10
			56.59	0.15	35.22	623			
			43.07	0.19	27.80	492			
0.15/0.20	4	3	74.27	0.11	60.03	1062	2.80	350	10
			56.59	0.15	48.03	850			
			43.07	0.19	37.91	671			

At the min. face width (L), the total weight of a drum motor grows approx.1.4 kg per 100 mm.

## TM113M optional list-drum motor/idler pulley

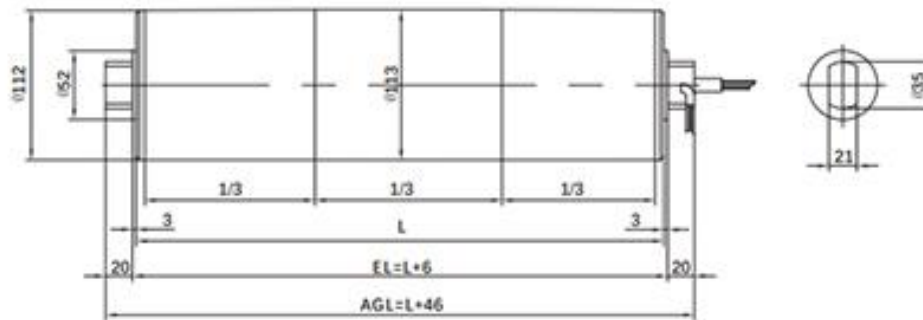
Specifications	Drum motor	Idler pulley
<b>Shell</b>		
Mild steel crowned	1	1
Mild steel cylindrical	2	2
<b>End housing (front &amp; rear)</b>		
Cast aluminium	1	1
<b>Electrical motors</b>		
1-phase asynchronous motor	1	
Voltage 1*230V/50Hz or 1*115V/60Hz	1	
Thermal protection	1	
<b>Lubricating oil</b>		
NO.32 hydraulic oil	1	
Low temperature oil	2	
<b>Electrical connection</b>		
Straight/elbow cable connector	1	
Oil resistant PVC cable	1	

Note:

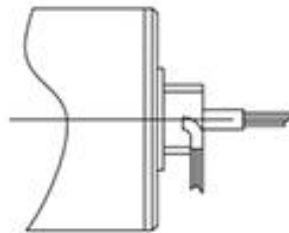
1-fitted as standard 2-optional extras

## Standard Dimension

### TM113M Drum motor



Straight/elbow cable connector



UT50 idler roller

